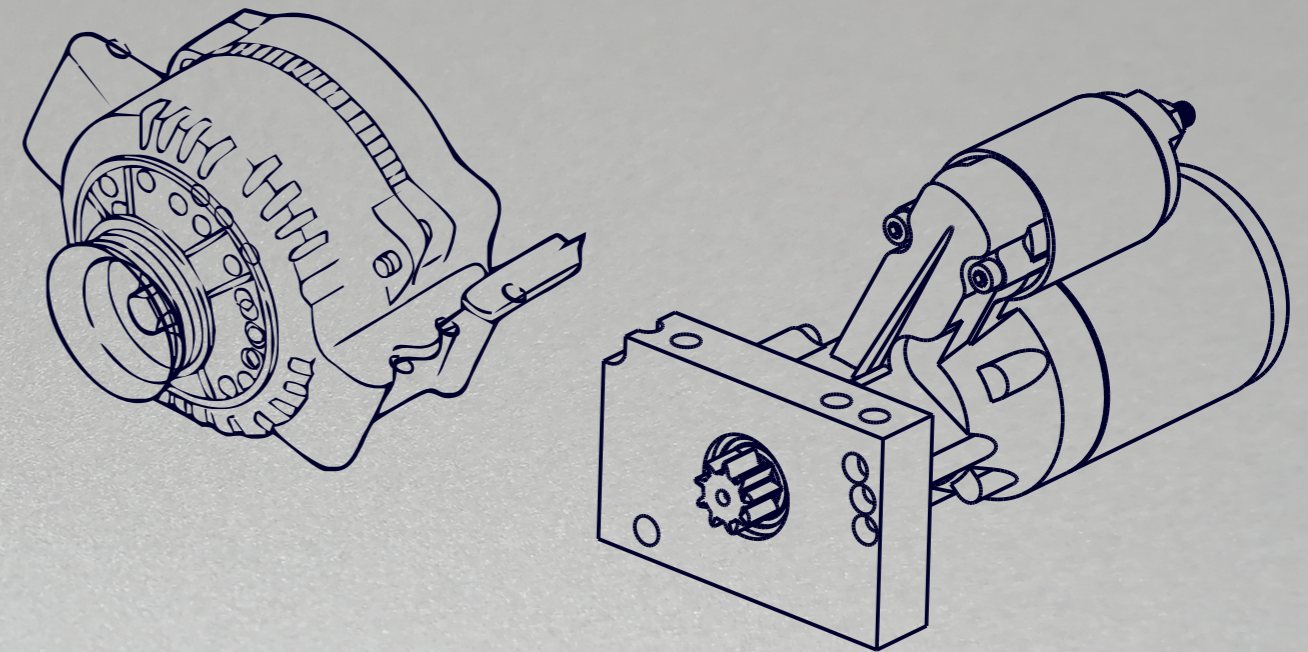




AOPEC

AOPEC
WORDS ON QUALITY




No.2615 Huanqing Rd.
Kunshan Suzhou 215300 China


Tel: +86 512 8616 0118
Fax: +86 512 8616 0078


E-mail: sales@aopec.com



**RACING STARTERS
& ALTERNATORS**

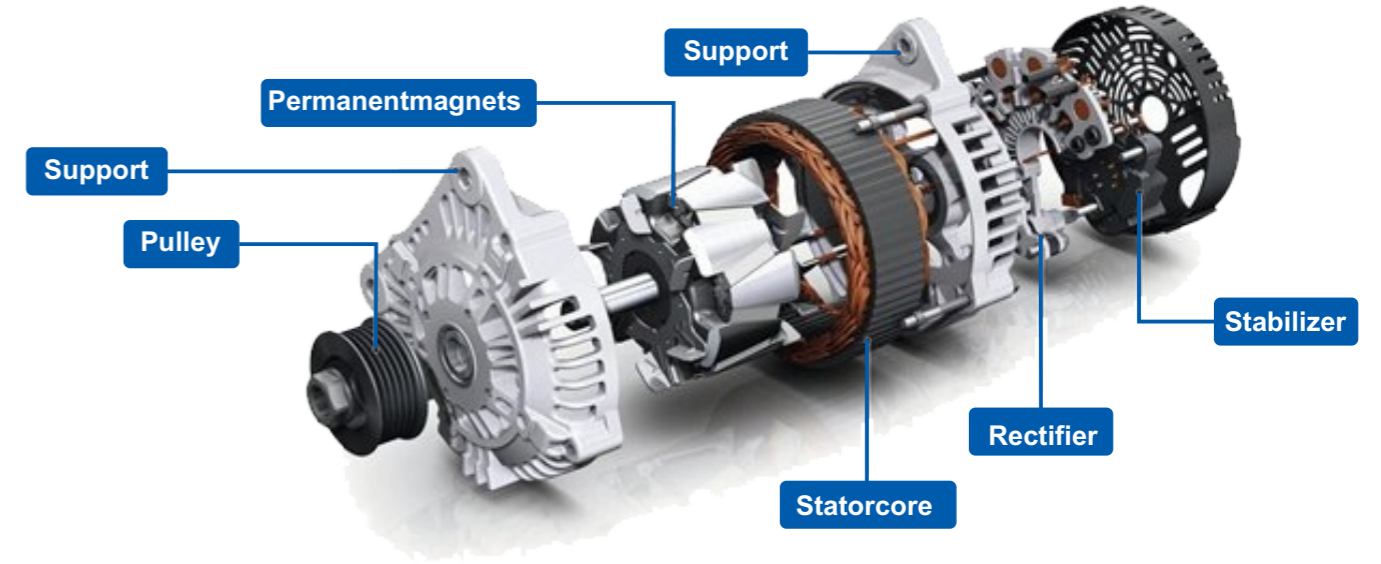
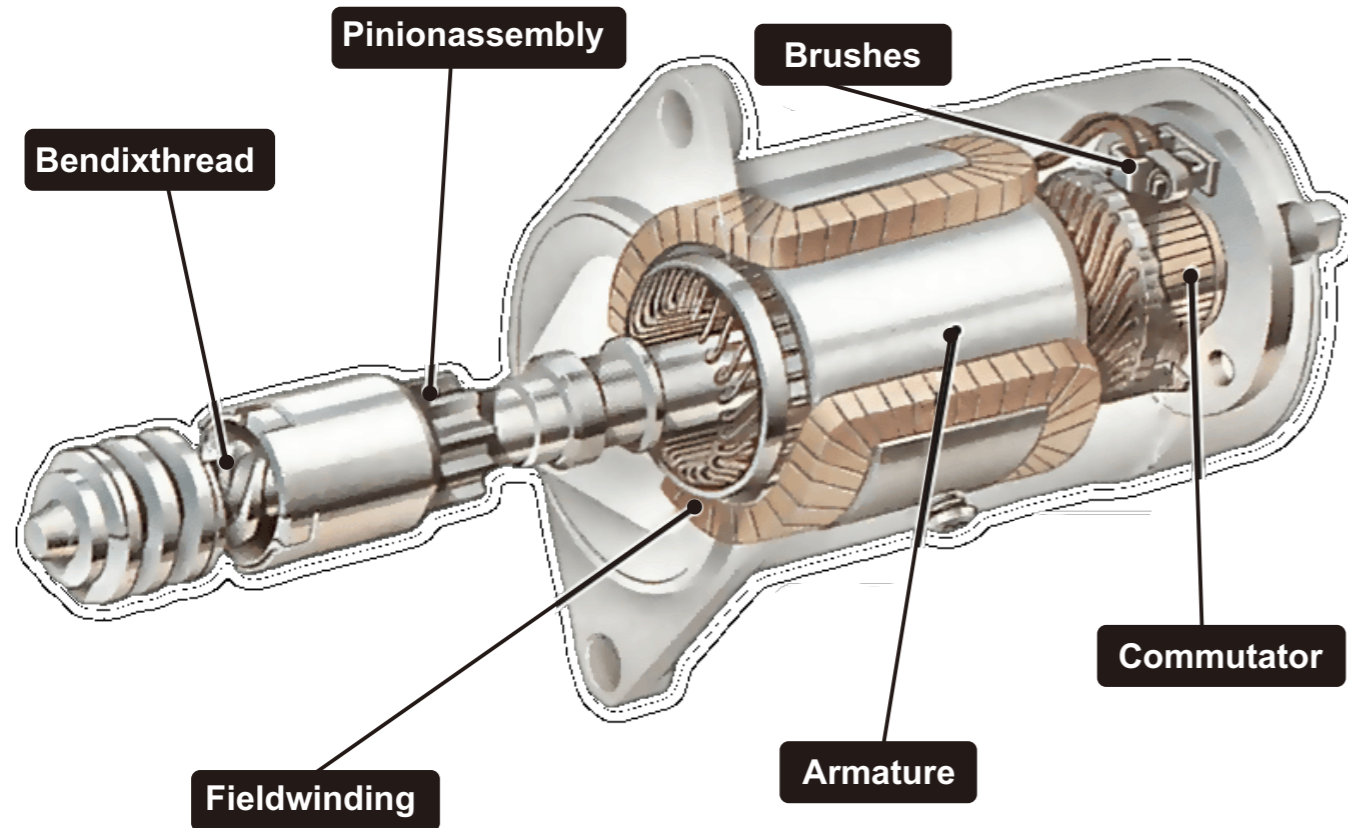
www.aopec.com

— 2020 EDITION —

Hi Performance Starters and Alternators

STARTERS

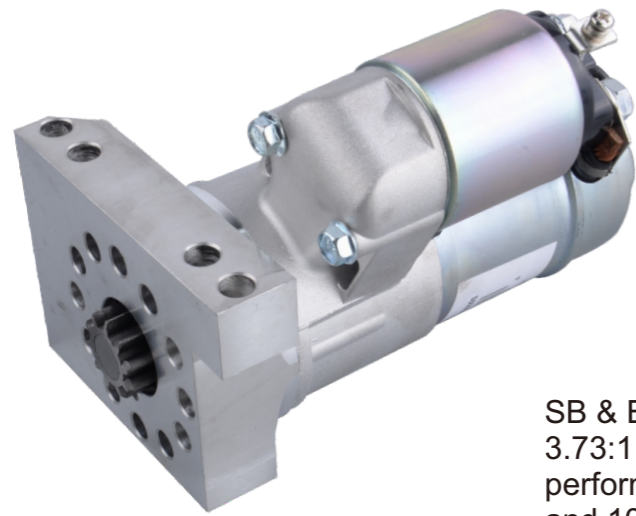
Aopec offers the highest quality starters and alternators for racing and hi performance use. Applications for Chevrolet, Ford, and Mopar are available.



AOPEC Hi Performance Starters and Alternators

- Ford
- Chevrolet
- Mopar





150101

SB & BB Chevy. Works with 153 or 168 tooth flywheels. 3.73:1 gear reduction. Permanent magnet for high performance street/strip use. Up to 11:1 compression SB and 10:1 compression BB. Straight bolt pattern. Clears Most oil pan kick outs and most headers.



150103

Hitachi style mini starter. SB & BB Chevy. Works with 153 and 168 tooth flywheels. 160ft. lbs. of torque suitable for 12:1 compression. Straight bolt pattern.

150102

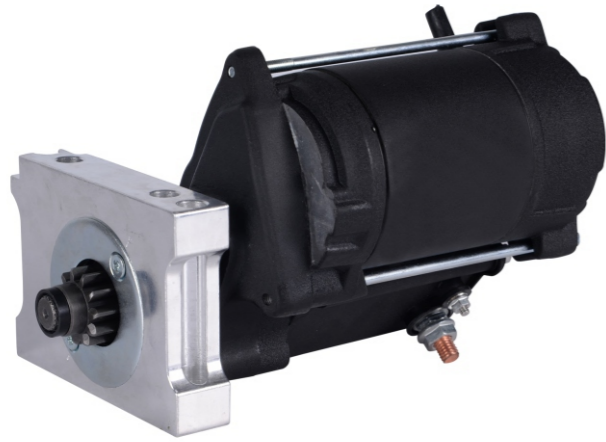
SB & BB Chevy. Works with 168 tooth flywheels. 3.73:1 gear reduction. Permanent magnet for high performance street/strip use. Up to 11:1 compression SB and 10:1 compression BB. Staggered bolt pattern. Clears Most oil pan kick outs and most headers.



150104

Hitachi style mini starter. SB & BB Chevy. Works with 153 and 168 tooth flywheels. 180ft. lbs. of torque suitable for 14:1 compression. Straight bolt pattern.





150105

Chevy 168/153 tooth DENSO style
straight mnt 180 Ft./Lbs 13:1.



150107

GM DENSO style LS-series engine
200 Ft./Lbs. 18:1.

150106

Staggered bolt GM DENSO style
staggered mnt 180 Ft./Lbs 13:1.



150201

SB Ford 289, 302, 351W mini starter.
Permanent magnets for high performance
street/strip use. Up to 11:1 compression.
Auto tans or 4/5 speed w/157T and 3/4"
drive depth. 4.4:1 gear ratio.





150202

Ford Small Block 289-351W/C A/T & 5 Spd. 157T 3/4 depth. DENSO Style 180 Ft./Lbs 13:1.



150205

Ford 351M, 400, 429, 460. DENSO Style 180 Ft./Lbs 13:1

150203

SB Ford 289, 302, 351W mini starter. Permanent magnets for high performance street/strip use. Up to 11:1 compression. Manual trans w/168T and 3/8" drive depth. 4.4:1 gear ratio.



150401

Fits Bert/Brinn Transmission 180 Ft./Lbs of torque 14:1 Compression



150204

Ford 351M, 400, 429-460. Permanent magnet starter for high performance street/strip use. Up to 11:1 compression.



ALTERNATORS

ALTERNATORS



100101

GM 1 wire alternator
85 Amp Chrome V-belt 1-wire 10si case.

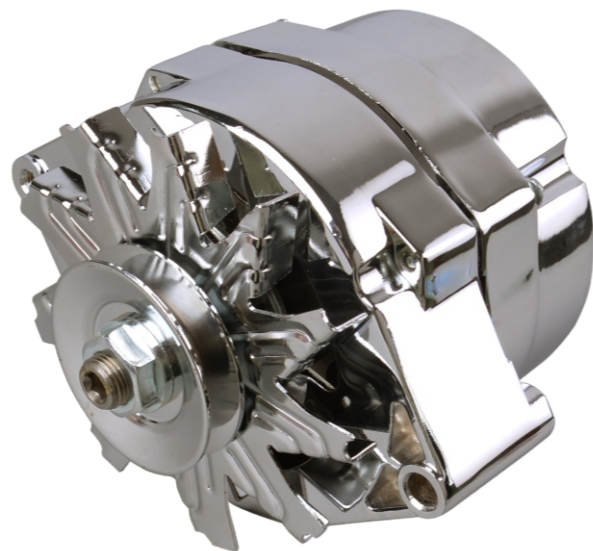


100103

GM 1 wire alternator
100 Amp Natural 6-rib belt 1-wire 12si case

100102

GM 1 wire alternator
100 Amp Chrome V-belt 1-wire 10si case



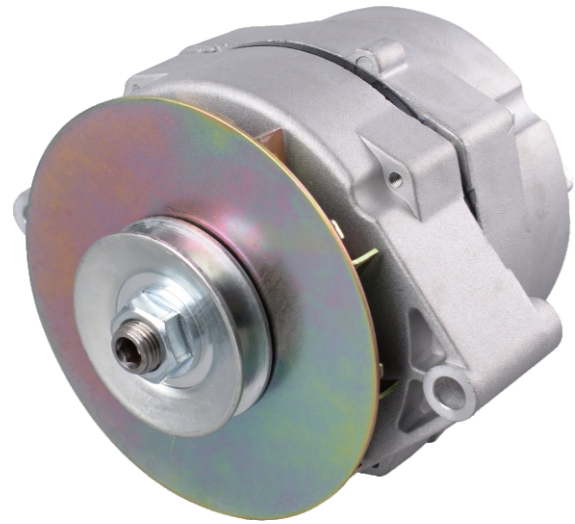
100104

GM 1 wire alternator
100 Amp Chrome 6-rib 1-wire 12si case



ALTERNATORS

ALTERNATORS



100105

GM 1 wire alternator
140 Amp Natural finish, V-belt 1-wire 12si case.

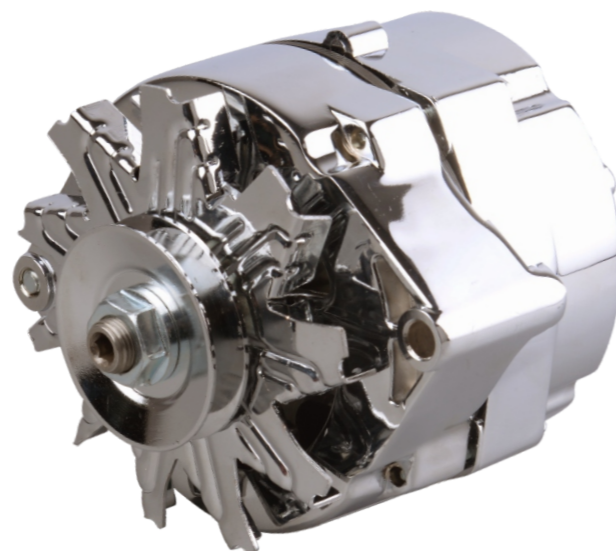


100201

Ford 1 wire alternator
100 Amp Chrome V-belt 1-wire

100106

GM 1 wire alternator
140 Amp Chrome V-belt 1-wire 10si case



100202

Ford 1 wire alternator
100 Amp Chrome 6-rib 1-wire



